



CITY OF STOCKTON

PUBLIC WORKS DEPARTMENT OPERATIONS AND MAINTENANCE

1465 S. Lincoln Street • Stockton, CA 95206-1941 • 209 / 937-8341 • Fax 209 / 937-8883
stocktonca.gov

LETTER OF CLARIFICATION NO. 1

OAK PARK SENIOR PARKING LOT RESURFACING, PROJECT NO. WD22012

TO ALL PROSPECTIVE BIDDERS

DATE: March 4, 2024

Letter of Clarification No. 1 for the above project consists of the following:

1. This acknowledgement form (see important Notice at the end of this document).

SPECIAL PROVISIONS:

2. Page 29, Section 9-1.02, "PAYMENTS"

ADD the following bid item:

33. 1' AC Deep Lift

- a. By the square foot, verified by weigh slops from an approved weigh station. Asphalt binder must be PG 64-10 or PG 70-10 and must comply with section 39-1.02 of Caltrans Standards Specifications. HMA for base and surface course paving shall be Type A, $\frac{3}{4}$ " maximum, medium aggregate. Includes compacting subgrade and placing aggregate base and constructing to the elevations, thickness, and locations, forming, reinforcing. Includes placing hot mix asphalt (leveling) supplying and placing asphalt binder, supplying, preparing, placing, grading the subgrade in preparation of the finished grade sections, as well as excavating and compacting asphalt concrete and constructing to the elevations, thickness and locations as indicated on the Plans described in these Special Provisions.

3. Page 31, Section 9-1.06, "QUANTITIES"

REVISE the following:

ITEM NO.	ITEM DESCRIPTION	UNIT	ESTIMATED QUANTITY
20	ALTERNATE BID ITEM: 6" CONCRETE VERTICAL CURB AT E. FULTON STREET ENTRY WITH NEW RAMPS	LF	280 59
33	1' AC DEEP LIFT	SF	822

Letter of Clarification No. 1
Oak Park Senior Parking Lot Resurfacing
Project No. WD22012
March 4, 2024
Page 2 of 2

BID FORMS:

4. BID FORMS: **REPLACE** with the revised Bid Forms dated 3/01/2024. Revised the Bidding Schedule on Pages 5 and 6. The following changes were made:
- **REVISE** Bid Item #20: ALTERNATE BID ITEM: 6" CONCRETE VERTICAL CURB AT E. FULTON STREET ENTRY WITH NEW RAMPS
 - **ADD** Bid Item #33: 1' AC DEEPLIFT

IMPROVEMENT PLANS:

5. Modification to the IMPROVEMENT PLANS:

REPLACE sheets with the attached revised sheets:

- a. Sheet 3, "EXISTING TOPOGRAPHY & DEMOLITION PLAN"
- b. Sheet 4, "PAVEMENT & DIMENSIONING PLAN"
- c. Sheet 7 "GRADING DETAILS"

REPLACE with the revised IMPROVEMENT PLANS Sheet 7 attached.

QUESTIONS & ANSWERS:

6. Please review all Questions and Answers for this project.

"Bids not presented on the revised bid forms shall be cause for considering the bid as non-responsive."

CHAD REED, DIRECTOR
PUBLIC WORKS DEPARTMENT



ERIC ALVAREZ
DEPUTY DIRECTOR PW/CITY ENGINEER

CR:EA:RA:TP:kt

NOTICE: THIS FORM MUST BE SIGNED AND RETURNED WITH YOUR BID. FAILURE TO INCLUDE OR ACKNOWLEDGE A CLARIFICATION MAY RESULT IN THE BID BEING REJECTED AS NOT RESPONSIVE.

CONTRACTOR: _____

CONTRACTOR SIGNATURE: _____

DATE: _____



LEGEND

- MINIMUM 2" GRIND. REMOVE AND DISPOSE OF EXISTING ASPHALT PAVEMENT. REMOVAL SHALL ACCOMMODATE THE PROPOSED IMPROVEMENTS, INCLUDING REMOVAL OF ALL STRIPING.
- FULL DEPTH REMOVAL. REMOVE AND DISPOSE OF EXISTING ASPHALT PAVEMENT AND SUBGRADE. REMOVAL SHALL ACCOMMODATE THE PROPOSED IMPROVEMENTS, INCLUDING REMOVAL OF ALL STRIPING. FOR NEW PAVEMENT SECTION SEE LEGEND ON SHEET 4.
- CONCRETE REMOVAL. REMOVE AND DISPOSE OF EXISTING CONCRETE AND SUBGRADE. REMOVAL SHALL ACCOMMODATE THE PROPOSED IMPROVEMENTS. FOR NEW CONCRETE SECTION SEE LEGEND ON SHEET 4.
- CLEAR & GRUB. REMOVAL SHALL ACCOMMODATE THE ALTERNATIVE BID ITEM FOR ADA RAMP IMPROVEMENTS.
- EXISTING CONCRETE TO REMAIN
- EXISTING STORM DRAIN LINE
- EXISTING SANITARY SEWER LINE

NOTES:

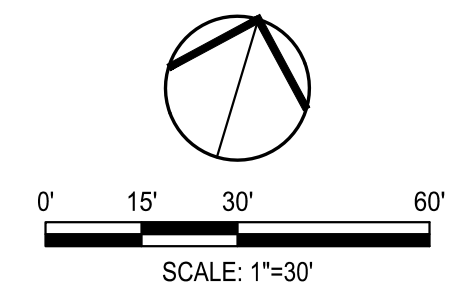
1. CONTRACTOR IS RESPONSIBLE FOR REMOVING AND PROPERLY DISPOSING OF ALL MATERIALS DEMOLISHED FROM THE SITE INCLUDING: PAVEMENT, CONCRETE, CURB AND GUTTER, STORM DRAINAGE MATERIALS AND ELECTRICAL MATERIALS.
2. ANYTHING NOT CALLED OUT TO BE REMOVED SHALL BE PROTECTED IN PLACE, AND IF DAMAGED, SHALL BE REPLACED / REPAIRED AT THE CONTRACTOR'S EXPENSE.
3. ALL EXISTING UTILITIES WERE PLOTTED FROM RECORD INFORMATION AND FIELD TOPOGRAPHY. ACTUAL LOCATIONS MAY VARY AND ADDITIONAL CROSSINGS MAY EXIST IN THE FIELD. IT IS IMPERATIVE THAT "U.S.A. LOCATING SERVICES" LOCATE AND MARK EXISTING UTILITIES PRIOR TO THE START OF EXCAVATION.
4. THE CONTRACTOR SHALL USE EXTREME CAUTION WHEN EXPOSING EXISTING UTILITY CROSSINGS AND SERVICES.
6. LANDSCAPE PROTECTION AND DEMOLITION TO BE PERFORMED BY LANDSCAPE CONTRACTOR(S). CONTRACTOR TO COORDINATE EARTH MOVING AND DEMOLITION OPERATIONS WITH LANDSCAPE CONTRACTOR(S).
7. BOLD ITEMS TO BE REMOVED UNLESS OTHERWISE NOTED.

PROTECTION KEY NOTES

- 1 APPROXIMATE RIGHT OF WAY / PROPERTY LINE.
- 2 PROTECT IN PLACE EXISTING CURB.
- 3 PROTECT IN PLACE EXISTING FIRE HYDRANT.
- 4 PROTECT IN PLACE EXISTING OVERHEAD POLE.
- 5 PROTECT EXISTING SITE LIGHT.
- 6 PROTECT EXISTING ELECTRIC CABINET IN PLACE.
- 7 PROTECT EXISTING STORM DRAIN MANHOLE / INLET IN PLACE. CONTRACTOR TO UNBLOCK/CLEANOUT ALL STORM DRAIN INLETS.
- 8 LIMITS FOR PAVEMENT REHABILITATION IMPROVEMENTS.
- 9 PROTECT IN PLACE EXISTING CONCRETE V-DITCH
- 10 PROTECT IN PLACE EXISTING ASPHALT. NOT PART OF SCOPE

REMOVAL KEY NOTES

- 1 REMOVE AND DISPOSE EXISTING SPEED BUMP. REMOVAL SHALL ACCOMMODATE THE PROPOSED IMPROVEMENTS.
- 2 REMOVE AND DISPOSE EXISTING ASPHALT CURB. REMOVAL SHALL ACCOMMODATE THE PROPOSED IMPROVEMENTS.
- 3 REMOVE EXISTING ADA STRIPING BY GRINDING. SEE SHEET 4 FOR PROPOSED ACCESSIBLE STRIPING LOCATIONS (TYP).
- 4 REMOVE AND DISPOSE EXISTING ADA POST AND SIGNAGE.
- 5 REMOVE AND DISPOSE EXISTING ADA SIGNAGE. SALVAGE POST TO REINSTALL ACCESSIBLE PARKING SIGNAGE PER DETAIL 2 ON SHEET 9.
- 6 FOR ALTERNATE BID. REMOVE AND DISPOSE EXISTING CONCRETE CURB AND GUTTER
- 7 FOR ALTERNATE BID. REMOVE AND DISPOSE EXISTING ADA CONCRETE RAMP. REMOVAL SHALL ACCOMMODATE THE PROPOSED IMPROVEMENTS.
- 8 FOR ALTERNATE BID. REMOVE AND DISPOSE FULL DEPTH EXISTING DRIVEWAY. REMOVAL SHALL ACCOMMODATE THE PROPOSED DRIVEWAY AND ACCESSIBLE RAMPS IMPROVEMENTS.
- 9 SAWCUT A NEAT, STRAIGHT LINE AT NEAREST JOINT
- 10 REMOVE AND DISPOSE EXISTING ASPHALT CURB BY GRINDING. REMOVAL SHALL ACCOMMODATE PROPOSED A.D.A PATH OF TRAVEL. FOR PAVEMENT INLAY SECTION SEE SHEET 4.



DATE SIGNED: 03/04/24

**OAK PARK SENIOR CENTER
PARKING LOT IMPROVEMENTS
EXISTING TOPOGRAPHY &
DEMOLITION PLAN**

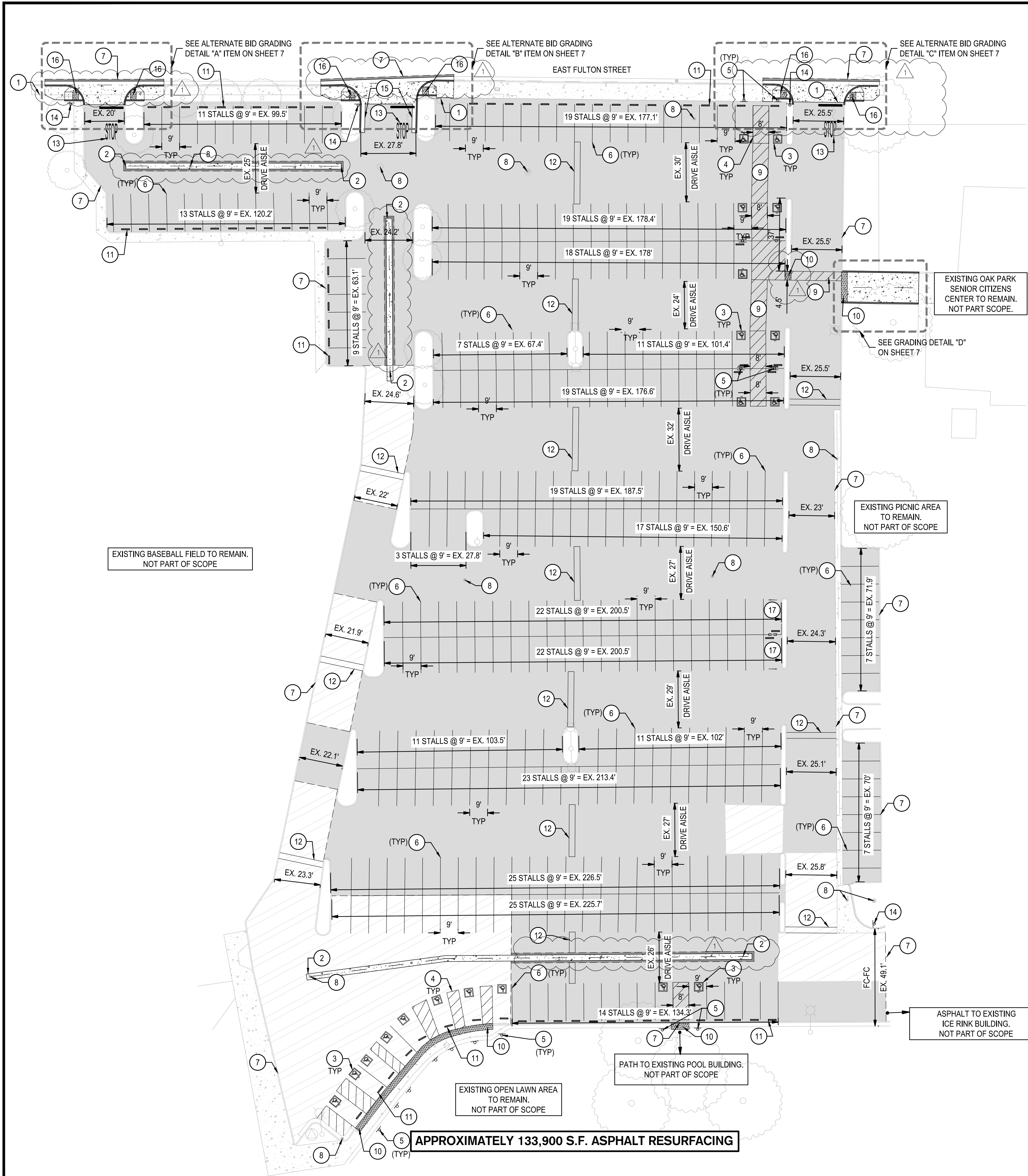
DEPARTMENT OF PUBLIC WORKS
CITY OF STOCKTON, CALIFORNIA

SIEGFRIED
3428 Brookside Road
Stockton, CA 95219
Phone: 209-943-0021
Fax: 209-942-0214
www.siegfriedeng.com

- CIVIL ENGINEERING
- STRUCTURAL ENGINEERING
- LANDSCAPE ARCHITECTURE
- LAND SURVEYING
- PLANNING
- ATHLETIC FACILITY DESIGN

Revision No.	Description	Date	By	Apprv. By
1	SITE COORDINATION	03-04-2024		

SCALE AS SHOWN	APPROVED BY: DATE	SHEET NO. 3
DESIGNED BY JR		OF 9 SHEETS
DRAWN BY JR		WD22012
CHECKED BY AK1		PROJECT NO.
RECORD DWGS.	CITY ENGINEER STOCKTON, CALIFORNIA	



LEGEND

- GRIND AND OVERLAY
MINIMUM 2" HMA INLAY OVER TENSAR GLASPAVE 25 WITH PG GRADE BINDER.
- ASPHALT DEEPLIFT
1.0" ASPHALT DEEPLIFT
- VEHICULAR ASPHALT PAVEMENT T.1-4
3.0" AC OVER 6" CLASS II AB OVER SUBGRADE PREPARED PER PROJECT'S GEOTECHNICAL RECOMMENDATIONS. LIFTS SHOULD NOT BE MORE THAN 3 TIMES AGGREGATE BASE SIZE. TACK COAT SHALL BE APPLIED BETWEEN LIFTS.
- CONCRETE
6.0" (3000 PSI) CONCRETE WITH #3 BARS AT 18" O.C. EACH WAY OVER 4.0" CLASS II AB OVER SUBGRADE PREPARED PER PROJECT'S GEOTECHNICAL RECOMMENDATIONS.
- TRUNCATED DOMES
TRUNCATED DOMES COMPLYING WITH CBC 11B-705. SEE DETAIL 4 ON SHEET 9.
- EXISTING CONCRETE TO REMAIN

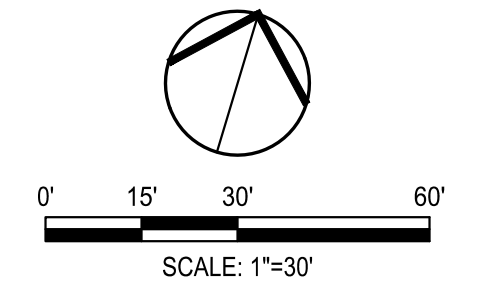
- ALL MATERIAL AND CONSTRUCTION PROCEDURES WITHIN THE SCOPE OF THIS PROJECT SHALL CONFORM TO ALL APPLICABLE CITY OF STOCKTON STANDARD SPECIFICATIONS (LATEST EDITION).
1. CONTRACTOR SHALL IMMEDIATELY NOTIFY ENGINEER OF ANY QUESTION THAT MAY ARISE CONCERNING THE INTENT, PLACEMENT, OR LIMITS OF DIMENSIONS NECESSARY FOR CONSTRUCTION OF THIS PROJECT.
 2. ALL DIMENSIONS ARE TO FACE OF CURB, FACE OF BUILDING, CENTER OF PAINT STRIPING OR PERPENDICULAR TO THE PROPERTY LINE. CONTRACTOR SHALL VERIFY DIMENSIONS MATCH STRUCTURAL AND ARCHITECTURAL PLANS PRIOR TO CONSTRUCTION.
 3. ALL COORDINATE POINTS ARE AT FACE OF CURB OR RADIUS POINT. BUILDING CONTROL POINTS ARE AT THE OUTER MOST EDGE OF THE BUILDING ENVELOPE.
 4. THE CONTRACTOR SHALL SAWCUT EXISTING PAVEMENT, CURBS, AND SIDEWALKS AT NEW PAVEMENT, CURB AND SIDEWALK JUNCTURES. NO JAGGED OR IRREGULAR CUTS WILL BE ALLOWED OR ACCEPTED.
 5. ALL PAINT SHALL BE 4" WIDE REFLECTIVE PAINT. WHITE ON TOP OF 6" WIDE BLACK STRIPE ON CONCRETE UNLESS OTHERWISE NOTED ON THE DRAWINGS.
 6. ALL PAVEMENT MARKINGS SHALL RECEIVE TWO COATS OF PAINT.
 7. ALL SIGNS SHALL CONFORM TO MUTCD, LATEST EDITION.
 8. ALL CURBS ARE 6" HIGH UNLESS OTHERWISE NOTED.
 9. CONTRACTOR TO REFER TO GEOTECHNICAL REPORT FOR CONSTRUCTION JOINT SPACING REQUIREMENTS IN CONCRETE PAVEMENT.
 10. ALL CRACKED, DAMAGED, OR DISPLACED CONCRETE CURB, GUTTER, AND SIDEWALK TO BE REMOVED AND REPLACED TO CURRENT CITY STANDARDS.

- KEYNOTES**
- | | |
|---|---|
| ① APPROXIMATE RIGHT OF WAY / PROPERTY LINE | ⑩ INSTALL TRUNCATED DOMES COMPLYING WITH CBC 11B-705. SEE DETAIL 4 ON SHEET 9. |
| ② INSTALL 3" CONCRETE V-DITCH. SEE DETAIL 8 ON SHEET 9. | ⑪ INSTALL 4" WHEELSTOP (TYP). SEE DETAIL 7 ON SHEET 9. |
| ③ INSTALL ACCESSIBLE SYMBOL. SEE DETAIL 3 ON SHEET 9. | ⑫ INSTALL 3" WIDE RUBBER SPEED HUMP. SEE DETAIL 6 ON SHEET 9. |
| ④ INSTALL ACCESSIBLE STRIPING. SEE DETAIL 1 ON SHEET 9. | ⑬ INSTALL "STOP" PAVEMENT MARKINGS AND STOP BAR STRIPING PER CAMUTCD FIGURE 3B-20. |
| ⑤ INSTALL ACCESSIBLE PARKING SIGNAGE PER DETAIL 2, SHEET 9. | ⑭ INSTALL TOW AWAY SIGNAGE PER DETAIL 5 ON SHEET 9. |
| ⑥ PARKING SPACES SHALL BE CLEARLY OUTLINED WITH 4" WHITE WIDE LINES PAINTED ON THE SURFACE. | ⑮ INSTALL 6" CONCRETE VERTICAL CURB AND GUTTER. SEE C.O.S STD. DWG. R-52. |
| ⑦ LIMITS FOR PAVEMENT REHABILITATION IMPROVEMENTS. | ⑯ ALTERNATE BID ITEM. INSTALL ACCESSIBLE RAMPS AND COMMERCIAL DRIVE PER C.O.S STANDRD DWG. R-59 |
| ⑧ PROTECT EXISTING STORM DRAIN MANHOLE / INLET IN PLACE. CONTRACTOR TO UNCLOG/CLEANOUT ALL STORM DRAIN INLETS. | ⑰ NOT PART OF SCOPE. STALLS RESERVED FOR CHARGING STATION WITH CHARGING UNIT. |
| ⑨ 4" WIDE, 3" O.C. BLUE STRIPING BORDER AND HATCHING FOR ACCESSIBLE CROSSWALK. SEE DETAIL "C" ON SHEET 4. NOTE: BORDER SHALL BE BLUE PAINT & HATCHING SHALL BE CONTRASTING WITH SURFACE. CONTRACTOR SHALL USE WHITE PAINT ON ASPHALT & BLUE PAINT ON CONCRETE. SEE CBC 11B-502.3.3. | |

RESTRIPING PARKING SUMMARY:

STANDARD STALLS:	321 STALLS
VAN ACCESSIBLE:	8 STALLS
ACCESSIBLE:	11 STALLS
TOTAL ACCESSIBLE:	19 STALLS
TOTAL PARKING STALLS:	340 STALLS

PER 2022 CBC TABLE 11B-208.2:
REQUIRED NUMBER OF ACCESSIBLE STALLS: 8 (2 VAN)
(1 ACCESSIBLE VAN STALL REQUIRED PER EVERY SIX ACCESSIBLE STALLS)



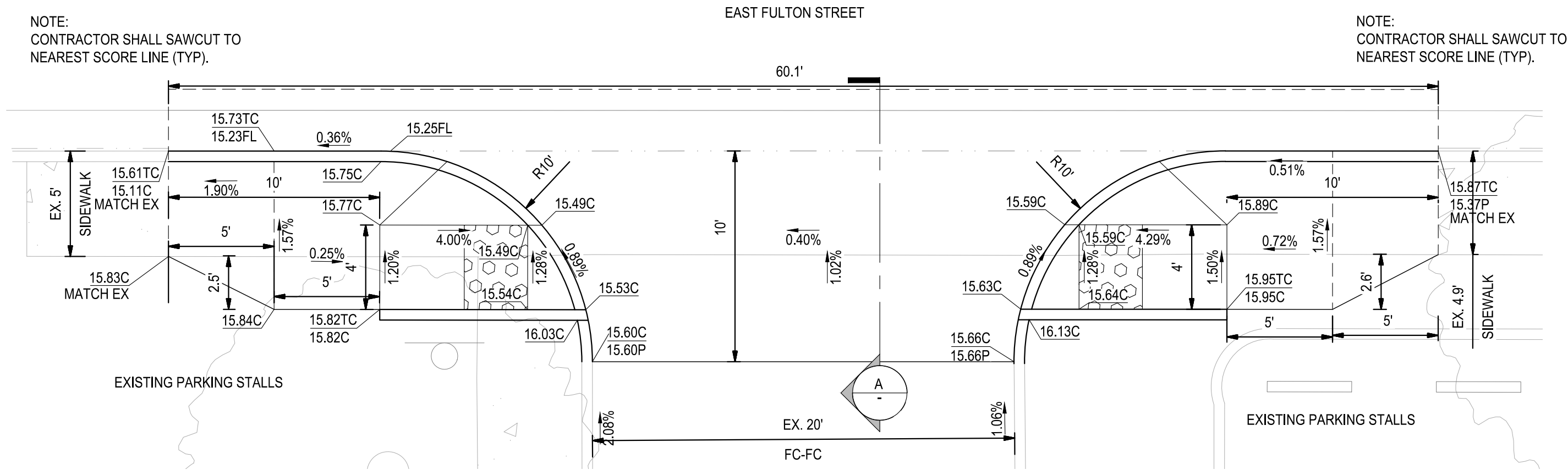
**OAK PARK SENIOR CENTER
PARKING LOT IMPROVEMENTS
PAVEMENT & DIMENSIONING PLAN**

DEPARTMENT OF PUBLIC WORKS CITY OF STOCKTON, CALIFORNIA		APPROVED BY: _____ DATE: _____	SHEET NO. 4
DESIGNED BY JR	DRAWN BY JR	CHECKED BY AKM	RECORD DWGS.
CITY ENGINEER STOCKTON, CALIFORNIA		PROJECT NO. WD22012	

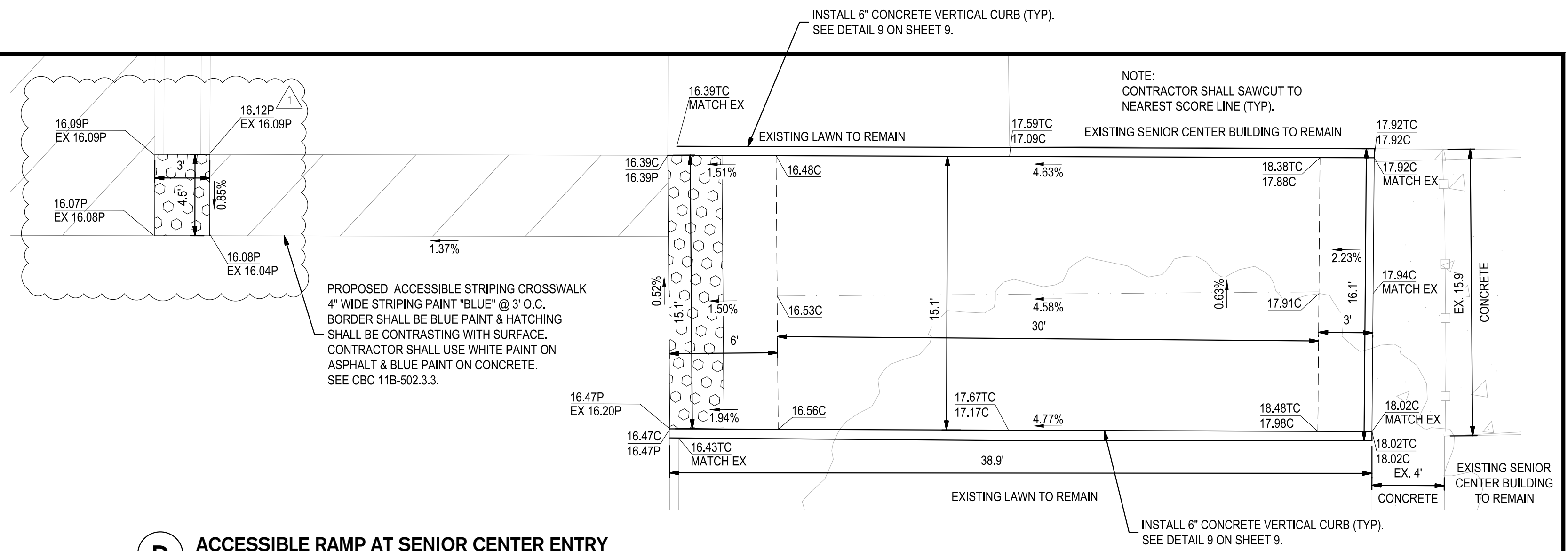
SIEGFRIED
3428 Brookside Road
Stockton, CA 95219
Phone: 209-943-0021
Fax: 209-942-0214
www.siegfriedeng.com

- CIVIL ENGINEERING
- STRUCTURAL ENGINEERING
- LANDSCAPE ARCHITECTURE
- LAND SURVEYING
- PLANNING
- ATHLETIC FACILITY DESIGN

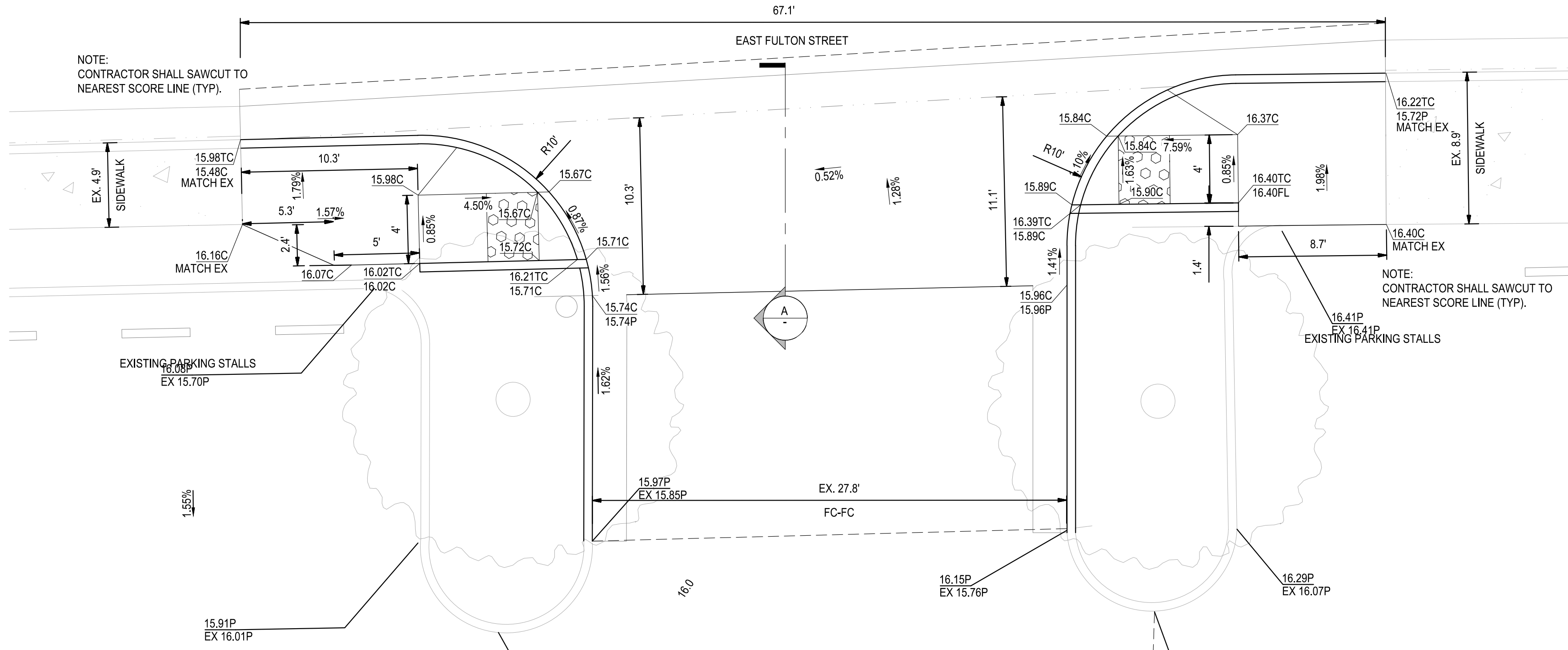
Revision No.	Description	Date	By	Apprv. By
1	SITE COORDINATION	03-04-2024		



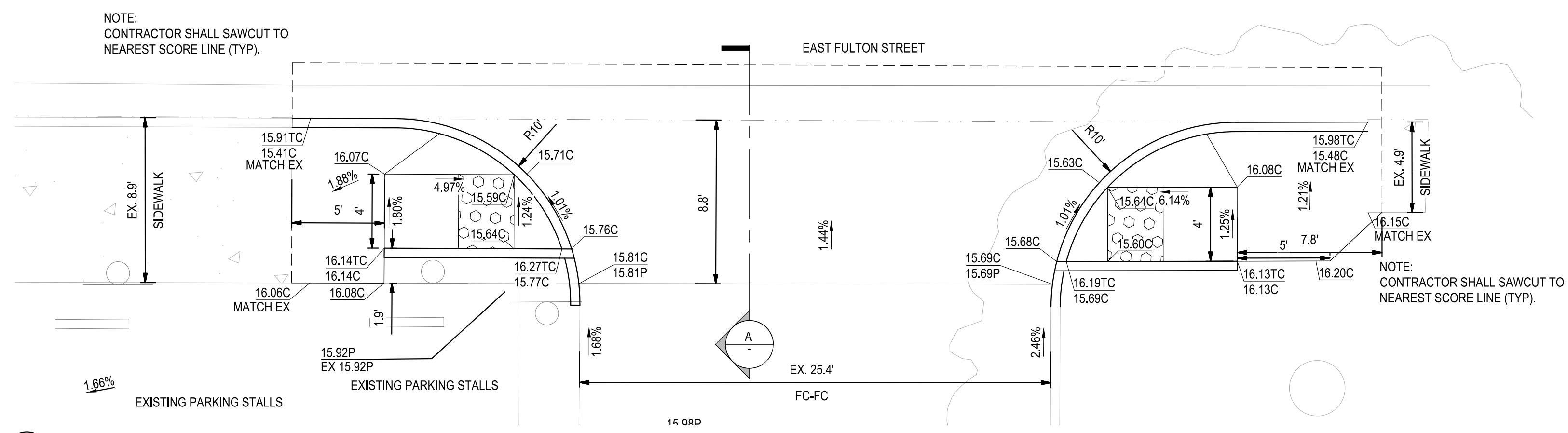
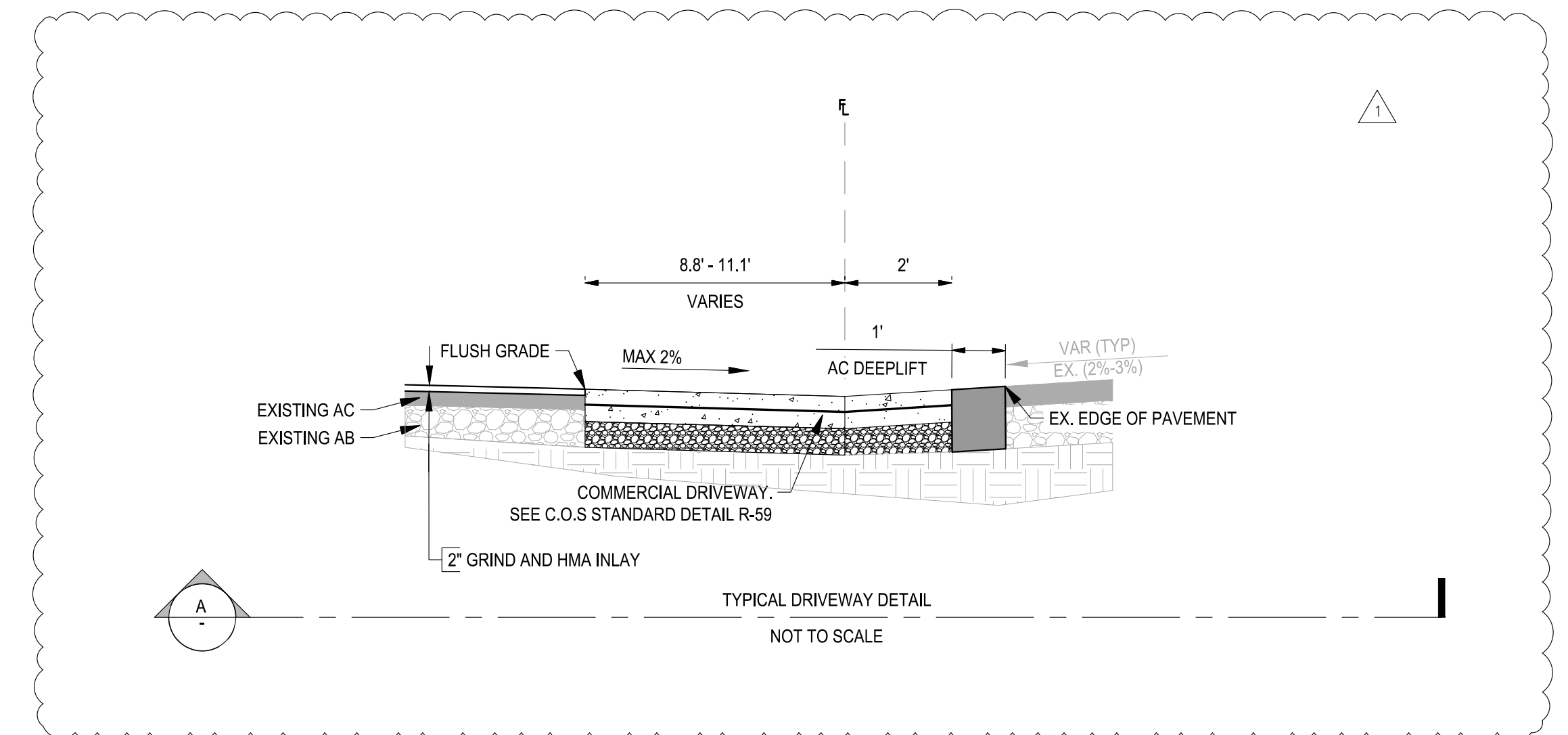
A ALTERNATE BID ACCESSIBLE RAMPS AT ENTRY
SCALE: 1"=5'



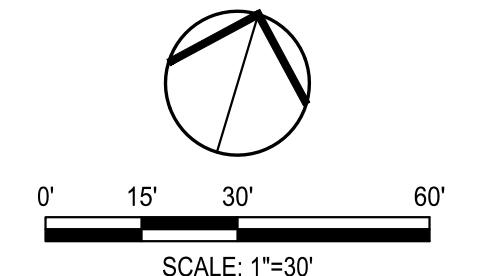
D ACCESSIBLE RAMP AT SENIOR CENTER ENTRY
SCALE: 1"=5'



B ALTERNATE BID ACCESSIBLE RAMPS AT ENTRY
SCALE: 1"=5'



C ALTERNATE BID ACCESSIBLE RAMPS AT ENTRY
SCALE: 1"=5'



**OAK PARK SENIOR CENTER
PARKING LOT IMPROVEMENTS**
GRADING DETAILS

DEPARTMENT OF PUBLIC WORKS CITY OF STOCKTON, CALIFORNIA		APPROVED BY: _____ DATE _____	SHEET NO. 7 OF 9 SHEETS
CITY ENGINEER STOCKTON, CALIFORNIA		PROJECT NO. WD22012	

SIEGFRIED
3429 Brookside Road
Stockton, CA 95219
Phone: 209-943-0021
Fax: 209-942-0214
www.siegfriedeng.com

- CIVIL ENGINEERING
- STRUCTURAL ENGINEERING
- LANDSCAPE ARCHITECTURE
- LAND SURVEYING
- PLANNING
- ATHLETIC FACILITY DESIGN

Revision No.	Description	Date	By	Appr. By
1	SITE COORDINATION	03-04-2024		